



vision  
innovation  
creativity  
collaboration

## Specification Sheet

Project Name:

Specifier Name & Location:

Quantity/Type:



### Muse Drum 24" Surface Mount | SMM244

The contemporary solution to general lighting applications offers strong lighting properties and even lighting distribution that eases eye strain and makes for a more pleasant work environment.

#### Included:

- Cast aluminum enclosure
- Surface washable shade
- Mounts to standard J-box
- Suitable for damp locations

**Weight:** 12 lbs



### Lamping

- ☐ 6800 Delivered Lumens Up/Down Combo 80W (0-10V UNV), 85lm/watt

### Color Temperature

- ☐ CCT 3000K CRI 90

- ☐ CCT 3500K CRI 90

Other CCTs available on request.

### Voltage

- ☐ 120V

- ☐ 277V

### Controls

- ☐ EMR - Remote emergency battery backup

### Finishes

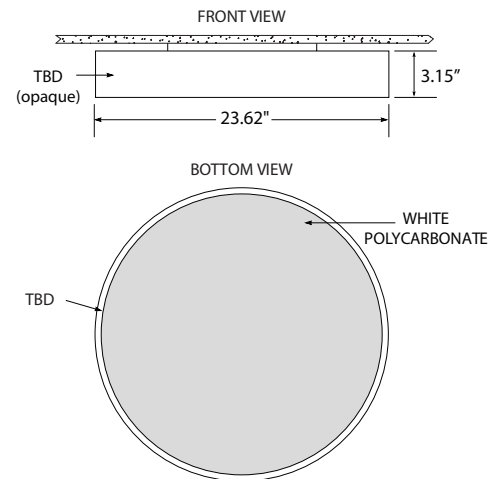


- ☐ F0W White

- ☐ F0B Black

### Shades

See shades on page 2.



## Specification Sheet

### Shades



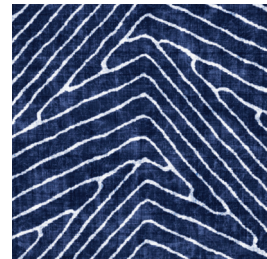
☐ D610 Chevron



☐ D611 Marble



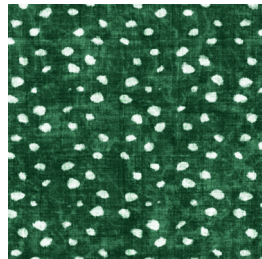
☐ D612 Squiggle



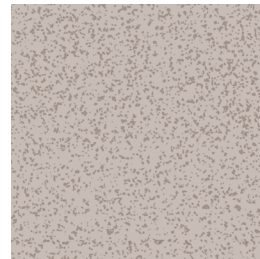
☐ D613 Maze



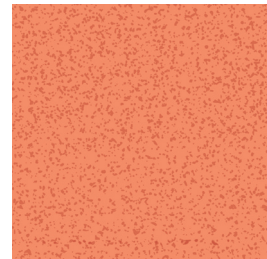
☐ D614 Abstract Floral



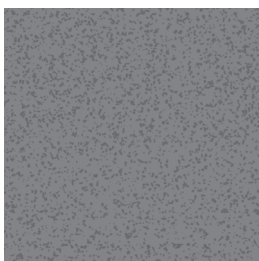
☐ D615 Freckle



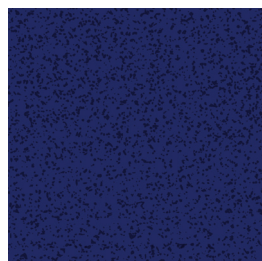
☐ D616 Speckled Clay



☐ D617 Speckled Apricot



☐ D618 Speckled Grey



☐ D619 Speckled Navy